

CUCKOO – Technical Rider

Minimum age for family performances: Ages 4 and up
Recommended ages for school performances: Ages 4 to 9
Show duration: 40-45 minutes
Audience size: 50-300 spectators
Language: Without words

Set-Up: 6 hours
Take-Down: 2-4 hours
Team: 2 puppeteers and 1 technician

Minimum space required on the stage:

Width: 18 feet / 5.5 m (minimum 16 feet / 4.9 m)
Height: 11 feet / 3.4 m
Depth: 16,5 feet / 5,03 m

If the stage is not raised, the recommended minimal distance between the side curtains in front of the set and the audience is approximately 6 to 8 feet / 1.83 m to 2.44 m.



The company provides:

- An autonomous lighting system. In large venues, the company will discuss the possibility of adding some venue lighting equipment, for example 2-4 Leko-style spotlights (variable focus lighting with shutters).
- Video projection equipment.

The venue provides:

Personnel

- 1 to 2 technicians for the load in and load out, to set up and strike the set and technical equipment and a lighting-sound director to manage the venue's lighting and sound equipment.

Sound Equipment

- A sound system* (mixer, amplifier, at least 2 house speakers plus 1 monitor speaker on stage behind the set).
- In large venues (if available): 2 wireless headset microphones and a transmitter-receiver system.

Stage Curtains

- Black curtains* from each wing (side) to one foot (30.5 cm) in front of the lighting boom on either side of the set to mask the two lighting booms from the audience.
- Two black curtains* to mask the back of the stage, placed just in front of the projector stand with the separation at the centre. Or, a black curtain at the back of the stage.

Electrical Outlets and Cords 120V-15A

- On stage, 3-4 regular black electrical extension cords* (Edison 120V-15A) plugged into 3-4 independent Edison electrical outlets at the back or side of the stage:
 - An extension cord from each lighting boom to an electrical outlet (2).
 - 1 to 2 extension cords between the video projector stand behind the set to 1-2 electrical outlets.
 - A few more extension cords if required for our equipment on the stage.
- At the technical booth at the back of the theatre, a regular electrical outlet (Edison 110V-15A) for our technical equipment, (two computers and other electrical modules).



Cables for Video, Lighting and Sound (Network Cat5e/Cat6, DMX and XLR)

- A Cat5e/Cat6 network cable running from the video projector on stage to the technical booth at the back of the theatre. If unavailable, we can provide one, but a path for the cable will need to be traced between the stage and the booth.
- A DMX (3-pin) cable and/or outlet between our onstage lighting system and the booth for our Mac computer which controls the lighting.
- A DMX Opto module (a DMX "splitter"/amplifier) at the booth if we need to use both our lighting system as well as the theatre's lighting in a single "universe".
- 3 XLR (3-pin) cables/outlets on stage to the booth, for the 2 switches that control the two "shutters" (modified CD drives) for the video projector and 1 for the switch which controls the fog machine. (They use 4-6V DC.)

Full darkness in the house and on stage is required for the video projection and a smooth stage floor is required for the set which rotates 180° on wheels.

Please note that **a professional fog machine is used a few times during the show**. The fog is water-based and "quick dissipating". It disappears almost instantaneously and remains within the zone of the puppet stage. While we prefer using fog, it is possible to perform the show without it.

* For a venue lacking basic equipment, the company could arrange to rent and bring a sound system, curtains and extension cords.

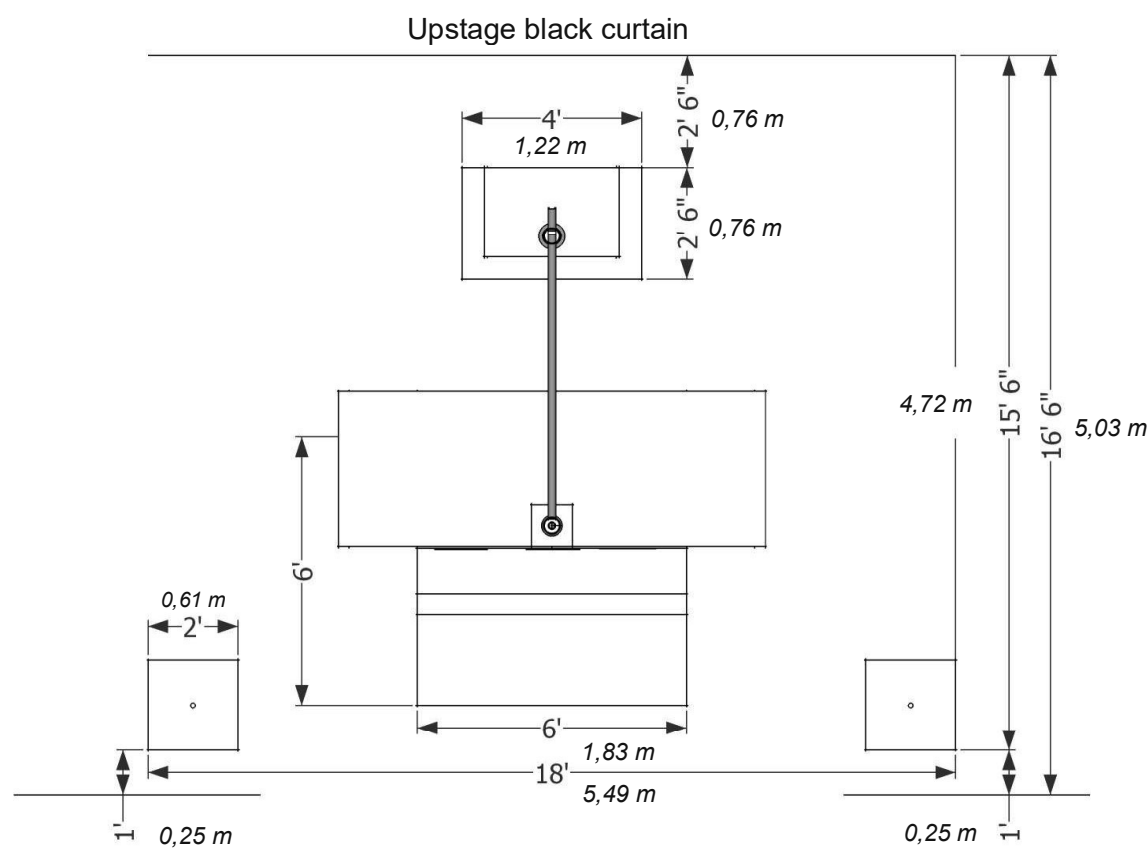
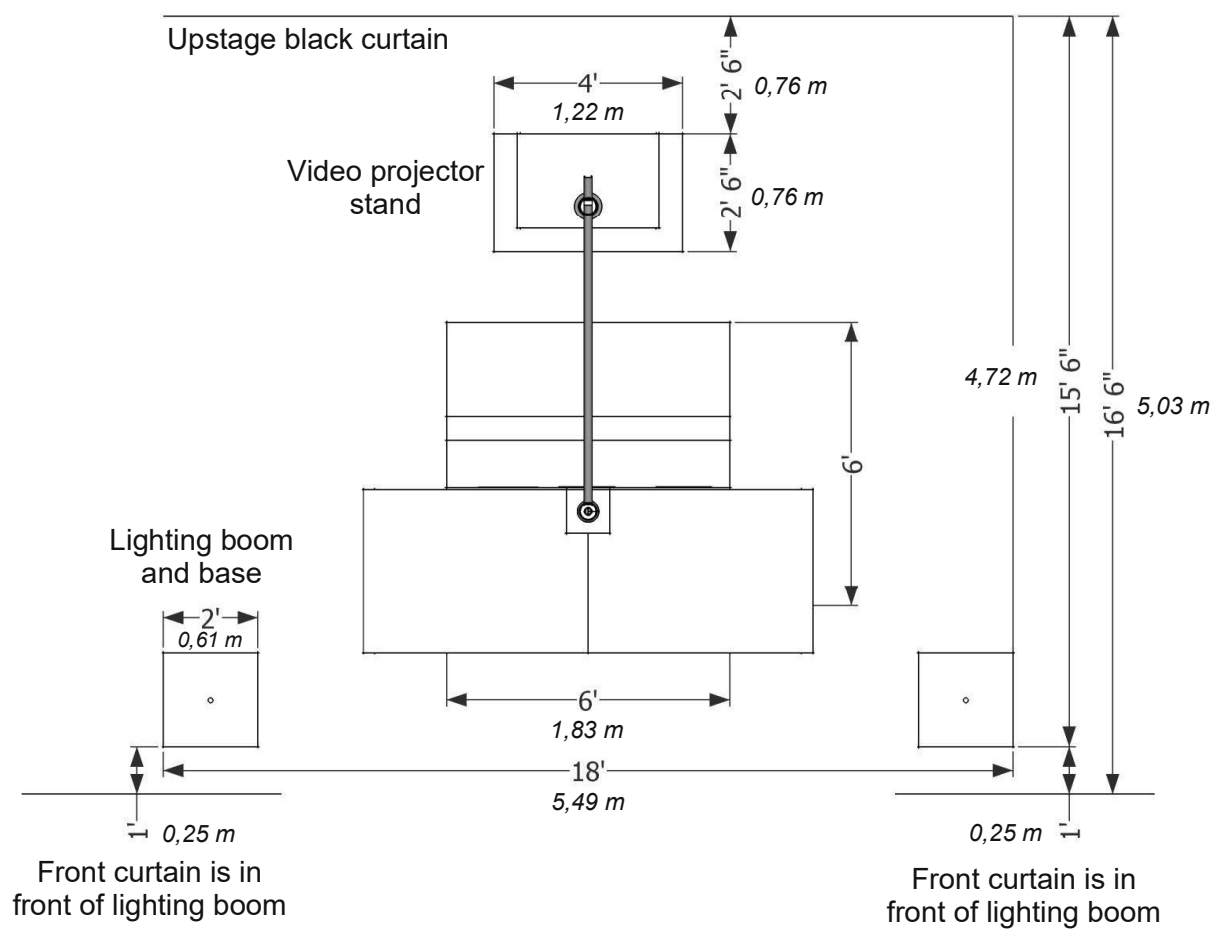
Contact: Graham Soul

5280 Fabre Street, Montreal, QC, CANADA H2J 3W5

graham.soul@hotmail.com

Cell +1-514-638-4221 / Home +1-514-524-1538

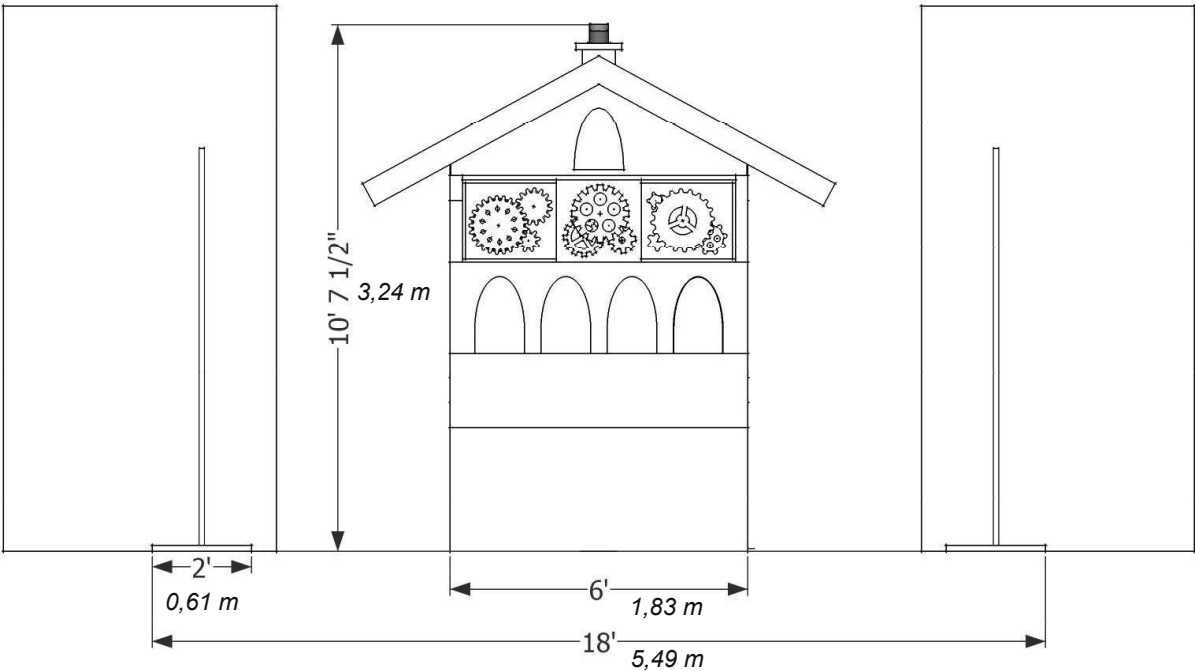
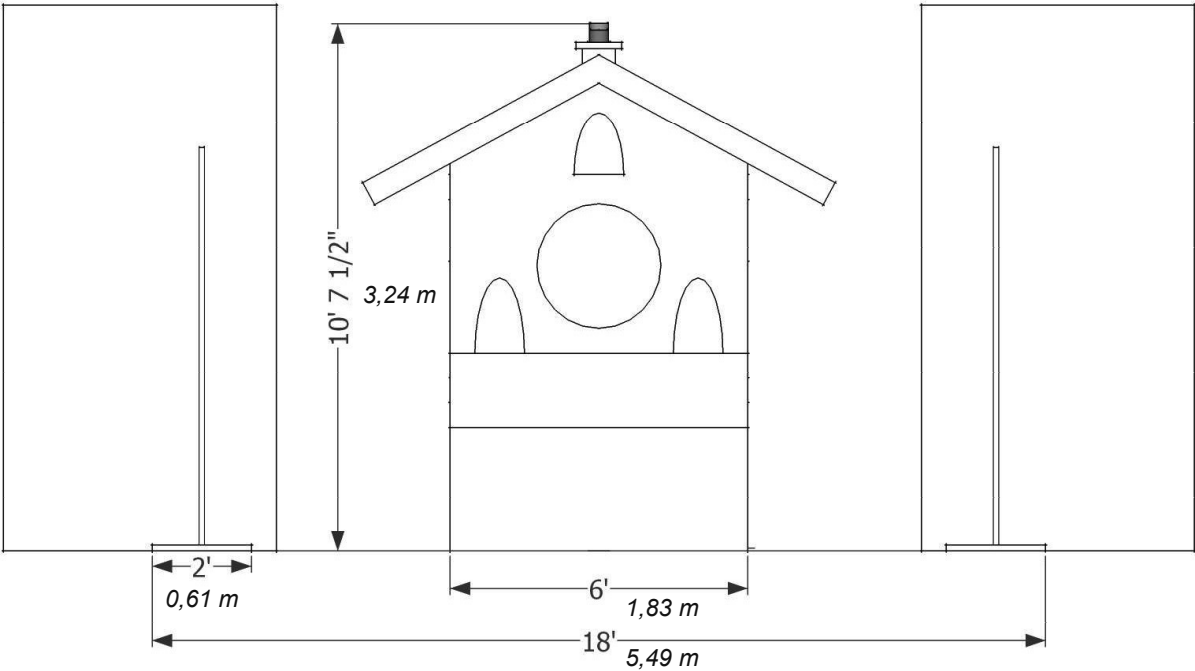
Cuckoo Set - Top View



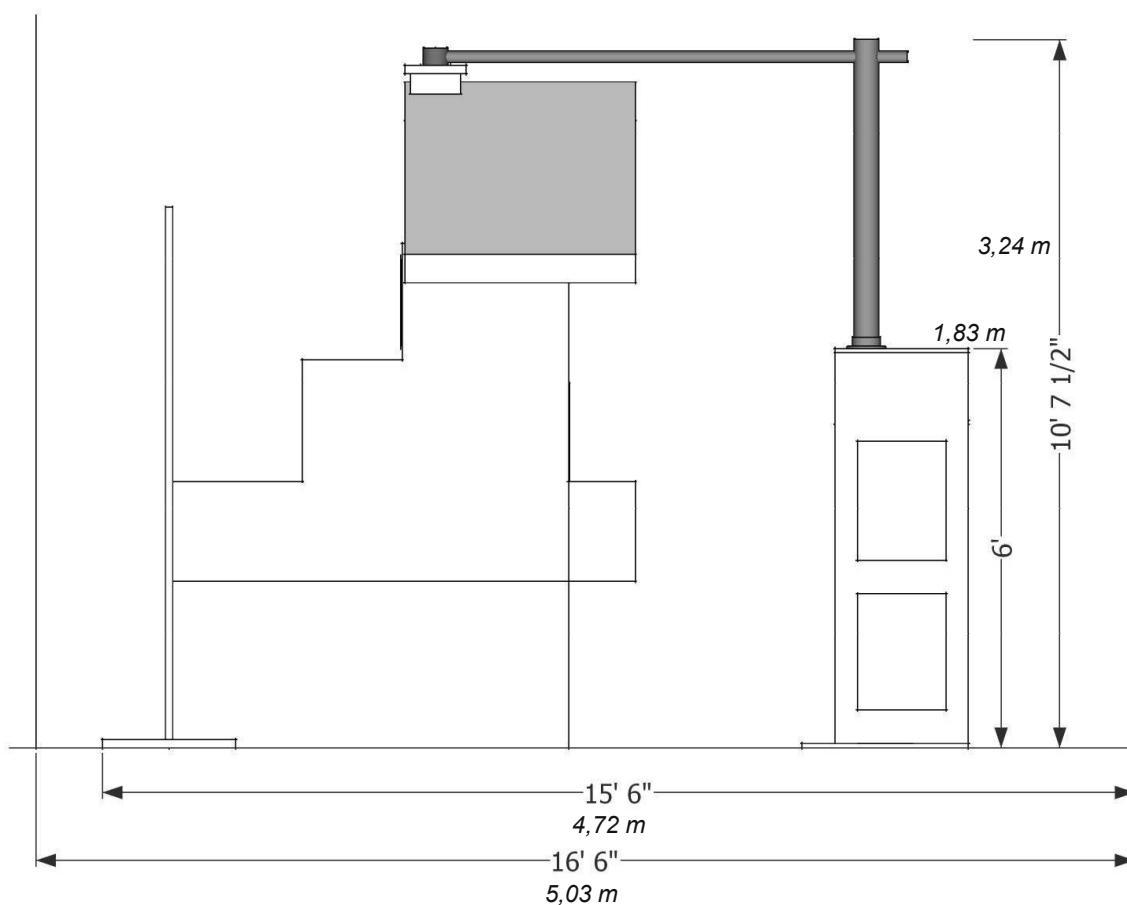
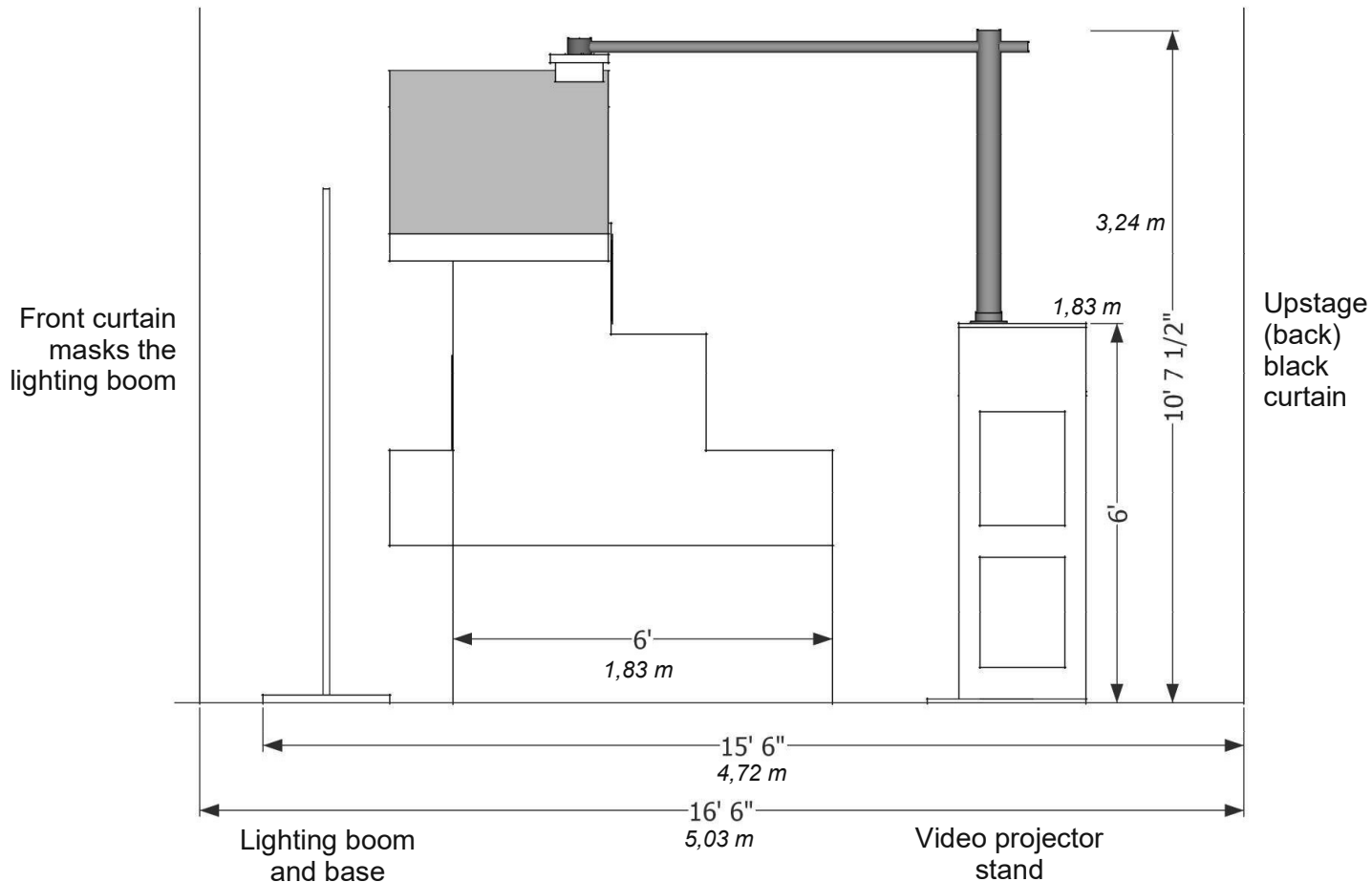
Cuckoo Set - Front View

Front curtain is in front of lighting boom

Front curtain is in front of lighting boom



Cuckoo Set - Side View



Cuckoo Set - Perspective View

