

TECHNICAL RIDER

LOVE WILL RETURN

By Kristina Troske

Contact

Kristina Troske

(819) 421-4501

kristina.troske@gmail.com

Puppet show for children

Two performers on stage

Length: 40 minutes

Audience: ages 4+

STAGE

Stage Area: proscenium

Playing area: width: 15' depth: 18' height: 9'

Audience configuration: seated on **risers** (necessary)

Maximum audience: 80-100

Masking: Black

SET UP

- Provide two (2) technicians to unload the set, set up and focus the lighting and sound
- Allow six (6) hours prior to the show to unload the vehicle, set up the set and props, adjust the lighting and focus the lighting and sound.
- Allow four (4) hours if a pre-hang has been done by the venue's technical director.
- Allow one and a half (1.5) hours after the show to strike the set, put away the costumes and props and load the vehicle

LIGHTING REQUIREMENTS

(See Annex 1, LX plan)

Controls and dimmers:

-Console ETC Element 2 with VGA color monitor and keyboard.

-ETC Express 48/96

(24) Dimmers 1.2 KW (dimmers capable of storing DMX Information for more than 10 min after the DMX signal had failed).

(1) DMX opto-splitter

Equipment:

(10) 36-degree ETC Source 4 Profile 575 watts with gel holder

(01) 26- degree ETC Source 4 Profile 575 watts or ETC Jr 25/50 with gel holder

(06) Par Cans Medium or Fresnels 1 KW with gel holders

Accessories:

(04) Gobo holder "B" size for ETC

(01) Cube 16" x16"

(01) Floor base

(01) Iris for the profile 26 degree

(02) Adaptor normal connector female- male twist lock (or whatever the lx equipment comes with or house connectors)

(01) Ladder or genie that can go high enough to focus the lights in the venue

NOTE:

All the equipment has to come with C-clamps, safety chain and gel holder. We also required extra bulbs for all the lx equipment of the list.

Please include all the cables, adaptors, etc. needed and in good shape so the equipment will function adequately.

A definitive list of equipment and a Lx plan will be forwarded once we have received the technical plans of the venue indicating the scaffold/grid configuration

Gels and Gobos

We will bring our gels and gobos

The aforementioned equipment can be adapted according to the theatre's inventory, however, any change in the equipment has to be approved by the Lx designer and the TD of *L'amour te reviendra*

SOUND REQUIREMENTS

Equipment provided by the company

- 1 MacBook Pro with Qlab
- 1 audio interface with stereo output

Equipment provided by the theatre

- 1 audio mixer with 2 inputs or 1 stereo input
- 4 d&b Q7 speakers (or equivalent model)
- 2 d&b VSUB subs (or equivalent model)

Speaker configuration

- 2 speakers suspended in FOH position
 - 2 speakers upstage on the floor directly behind the set
 - 2 subs in FOH position or upstage, depending on the configuration of the theatre
- *all pairs of speakers receive the same stereo output

DRESSING ROOMS

Provide one heated and clean dressing room for 3 persons with mirrors and toilettes

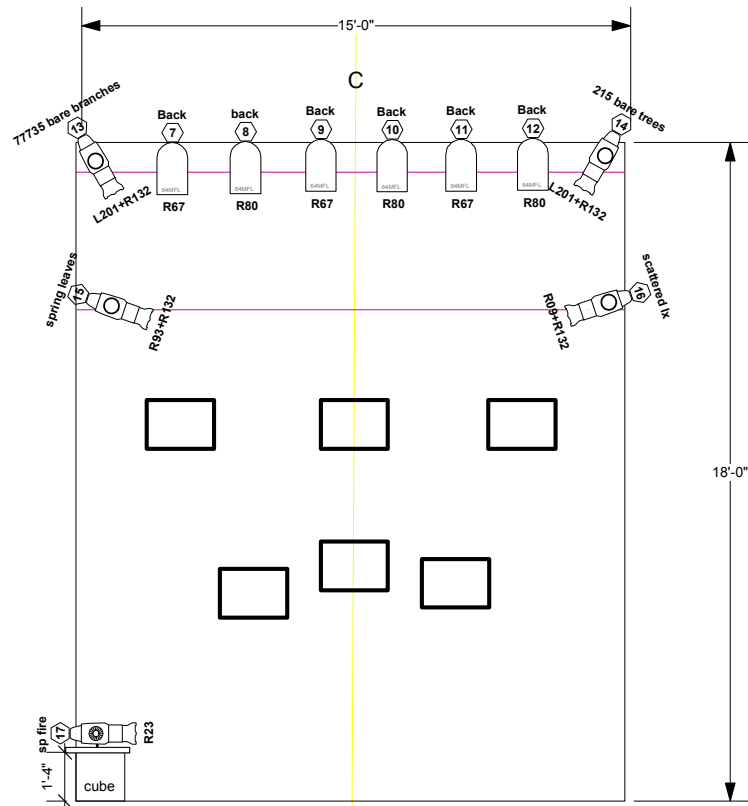
PARKING

Provide parking for one vehicle

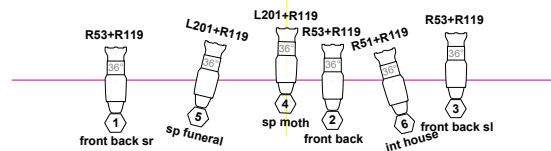
ANNEX 1

Plan d'éclairage

Ce plan est à titre indicatif. Il ne sert pas de plan final pour montage. Une version sera mise à jour et adaptée à chaque salle par la direction technique



Instruments	
	Par 64
	Découpe Jr 25/50
	Découpe ETC 36
	Gobo holder
Legend	
	Color
	Channel Purpose



L'amour te reviendra
MIAM
Dir. Kristina Troske
Prod and stage manager: Kristelle Delorme
Set Design: Sara Sabourin
Lx Designer: Flavia Hevia
Date: May 30 2022
Scale: 1/4"