

MWANA and the turtle's secret

INFORMATION ON THE PRODUCTION

Play summary:

Spun from an African tale, this is the beautiful story of a courageous young girl named "Mwana" who lives in a village deep in the forest. Every day, a giant monster comes and steals the villagers' food. When *Mwana* proposes confronting the giant, the Village Chief wonders how such a little girl could defeat a monster that no one has ever been able to stop. Is there a secret that only Mwana knows? The play takes the audience on a theatrical journey of courage, love and friendship as it explores the French proverb "We often need someone smaller than ourselves". The story is told by Canadian and Congolese performers and uses a range of theatrical art forms, including puppets, shadow theatre and object theatre.

Stage dimensions:

- 50 m width x 4.88 m depth x 2.44 m height (18' width x 16' depth x 8' height).
Allow a minimum of 4-5 feet between the stage and the first row of spectators on the ground.

Target audience: 3 to 8 years old (families) and 4 to 8 years old (school groups)

Performance length: 45 minutes

Max capacity: 150 to 250 spectators

Set-up: 3 hours before the show with the help of one or two technicians to unload the transport vehicle and set up the sound system, the set and the lighting.

Strike: 1h30

Staff on tour: 2 performers

Type of show: Play with a storyteller and puppeteer, shadows, objects and puppets / self-contained show with sound and lighting

Type of rooms: This show is designed for small and medium size areas, but also community halls, schools and non-traditional performance venues.

MATERIAL AND TECHNICAL NEEDS

Sound:

- in case of a performance in an equipped space, the TAE uses loudspeakers that are connected to its own mixer backstage. The sound is controlled by the performers using a QLab. A sound technician is required to set the sound balance;

- in case of a performance in a non-equipped area (schools, community halls, etc.), the company may provide speakers for an additional-charge (rental). Please notify the company if this is the case.

Lighting:

- 2 accessible and separate electrical outlets;

- low light for shadow theatre play;

- if spotlights are available in the theatre, the lighting could be enhanced by adding 4 white lamps and 4 blue lamps in "Front of the house" FOH;

- note that FOH lights can be controlled by a technician or controlled by the lighting board operated by the performers on stage.

Background:

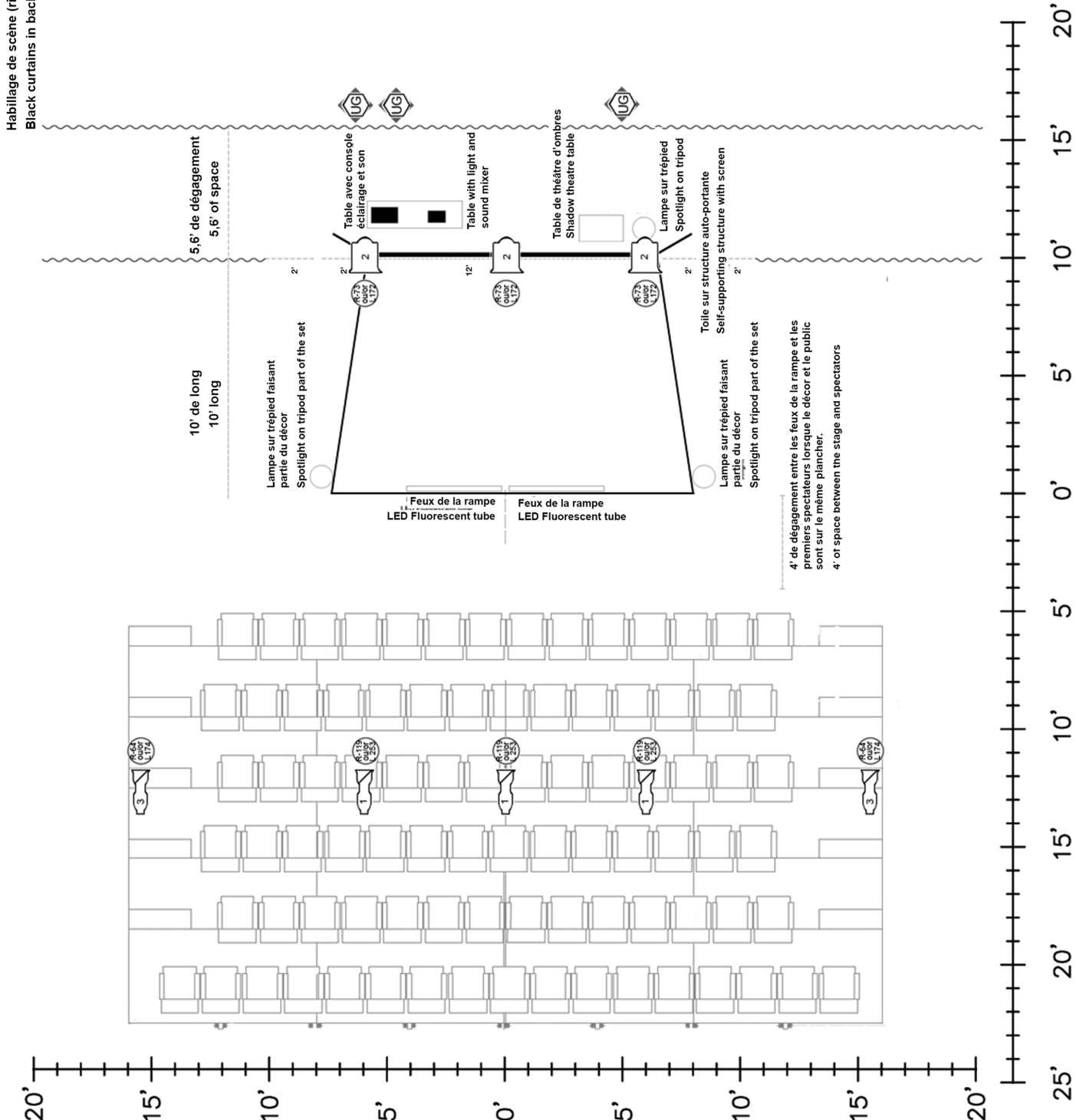
- 1 black curtain for the back stage (approximately 20 ft or 6 m and 12ft or 3.7 m);
- 2 black curtains for the sides.

Weight and volume of design set and accessories:

Weight: 143 kg

Volume: 1,12 m X 1,1 m X 2,3 m = 2,83 m³

LIGHTING PLOT



Habillage de scène (rideau noir au fond)
Black curtains in background

Mwana

Plan d'éclairages Lighting Plot

Compagnie (Company):

Théâtre à l'envers

Mise en scène (Director):

Patricia Bergeron

514 544-9370

diffusion@theatrealeners.ca

Éclairages (Lighting):

Mathieu Marcil

514 276-4493

mathieu.marcil.1x@gmail.com

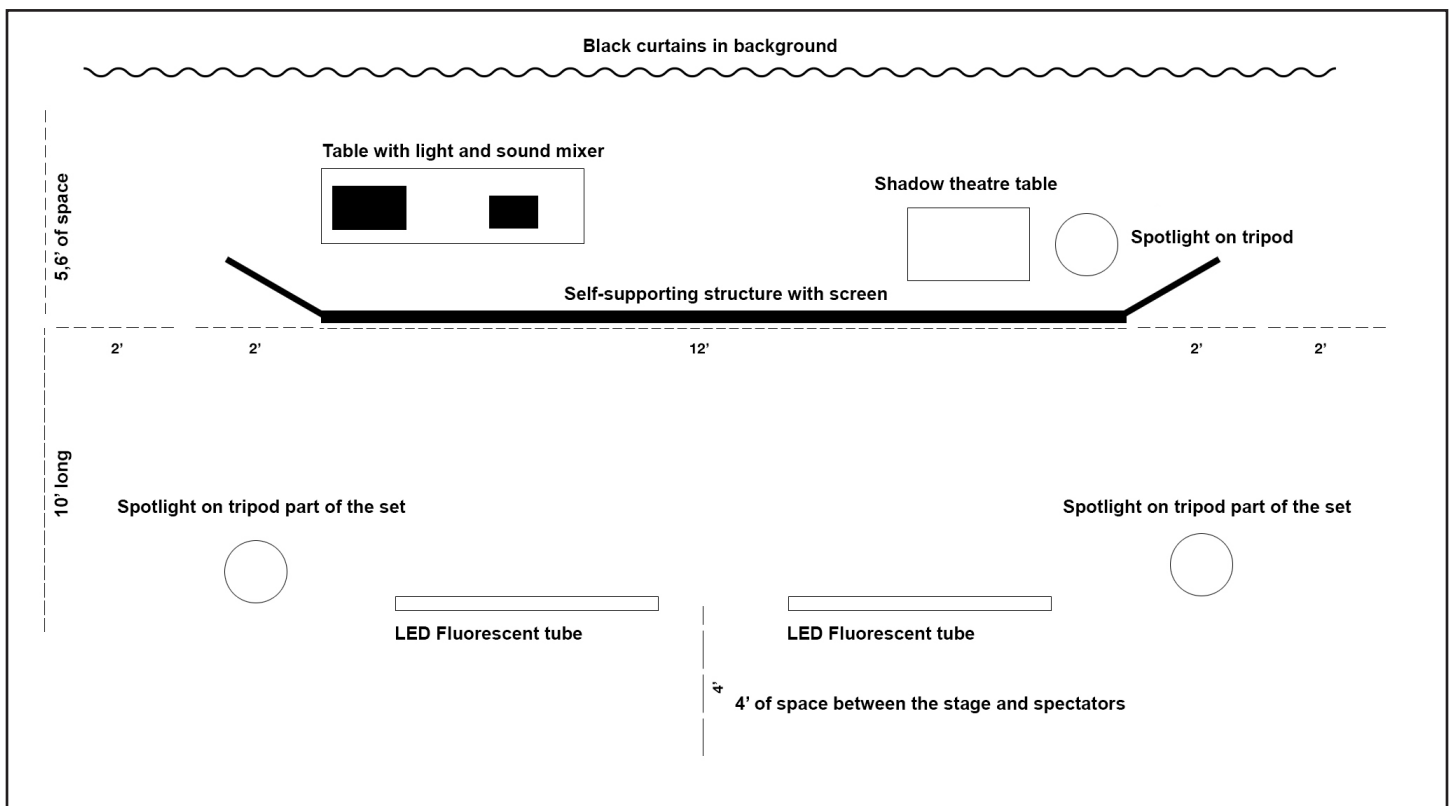
Échelles (Scales):

1/8"=1'0" (8,5"X11")

1/4"=1'0" (17"X22")

Date: 08/01/2020

STAGE PLAN



VIDEO LINK

Trailer : <https://vimeo.com/477997968>

Full length version in english : <https://vimeo.com/manage/videos/343309420>

Password : TAEMwana

THE PRESENTER HEREBY COMMITS TO :

1. provide theatre and stage plans upon contract signature (at least 8 weeks prior to first performance);
2. provide a heated and clean dressing room for 2 people with toilets;
3. provide water for both performers;
4. providing 2 individual room accommodations, ideally without carpet, in case they are made available by the presenter;
4. It is imperative that a theatre director be on hand during the performances.

Contact

Théâtre À l'Envers

5350, Lafond street
Montréal (Québec)
H1X 2X2
info@theatrealenvers.ca
www.theatrealenvers.ca
+1.514.544.9370

Patricia Bergeron

General and artistic director
administration@theatrealenvers.ca
<https://www.theatrealenvers.ca>
+ 1.514.544.9370